

2007 saw the release of DCMF Competition No. 6 for the provision of two PFI prison projects at Belmarsh in south east London and Maghull in Sefton in the north east near Liverpool. Brennan Williams Lester qualified at Competition Interview to offer full architectural services on both projects and have recently completed the ITPD Stage 2 documentation of the competition, having reached the final three consortia in the competition.

Belmarsh West is a cat B male local prison designed to accommodate 600 convicted and remand prisoners with an operational capacity of 900 prisoners on a site of 16.2 hectares and a particular focus on vocational training and educational enhancement as part of the prison regime seeking to reduce re-offending. Healthcare and learning skills are therefore prominent in the detailed design with the local PCT and LSC partnering in the provision of these services. There was a planning restriction on building heights from two to four storeys across the site and this dictated the position of the pinwheel houseblock and ancillary buildings.

The proposals include an Energy Centre outside the prison boundary wall utilising sustainable / renewable resources.



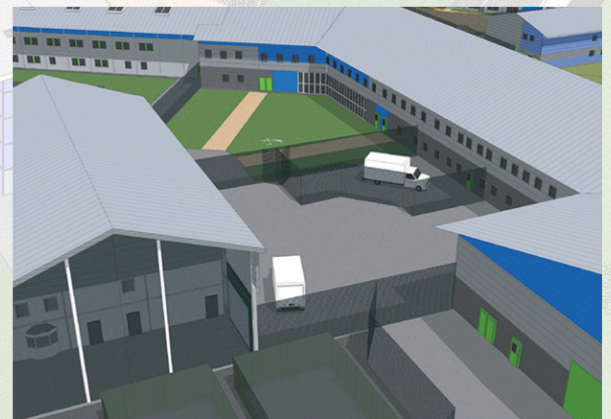
IMPRESSION OF ENTRY BUILDING



VIEW OF HOUSEBLOCKS



NORTH WEST ELEVATION



BARRIER BUILDING